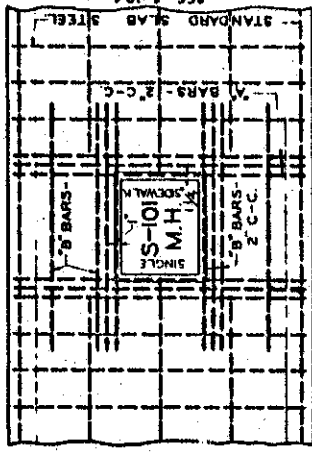
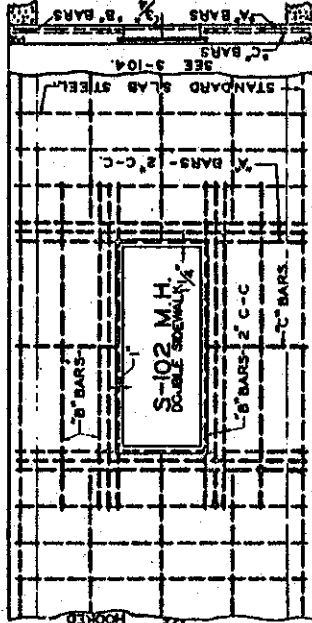


S-103 MANHOLE BOX	A BARS NO. SIZE LENGTH	B BARS NO. SIZE LENGTH	C BARS NO. SIZE LENGTH
2 R.	6 3/8 @ 3'-9 1/2"	0	0
2.5 R.	6 5/8 @ 4'-3 1/2"	4 5/8 @ 6'-6"	0
3 R.	6 3/4 @ 5'-1 1/2"	6 5/8 @ 6'-6"	6 5/8 @ 1'-0"
3.5 R.	6 5/8 @ 5'-7 1/2"	6 5/8 @ 6'-6"	6 5/8 @ 1'-3"
4 R.	6 3/8 @ 6'-1 1/2"	8 5/8 @ 6'-6"	8 5/8 @ 1'-6"
4.5 R.	6 5/8 @ 6'-7 1/2"	8 5/8 @ 6'-6"	8 5/8 @ 1'-9"
5 R.	6 3/4 @ 7'-4 3/4"	10 5/8 @ 6'-6"	10 5/8 @ 2'-0"
5.5 R.	6 3/4 @ 7'-10 3/4"	10 5/8 @ 6'-6"	10 5/8 @ 2'-3"
6 R.	6 3/4 @ 8'-4 3/4"	10 5/8 @ 6'-6"	10 5/8 @ 2'-6"

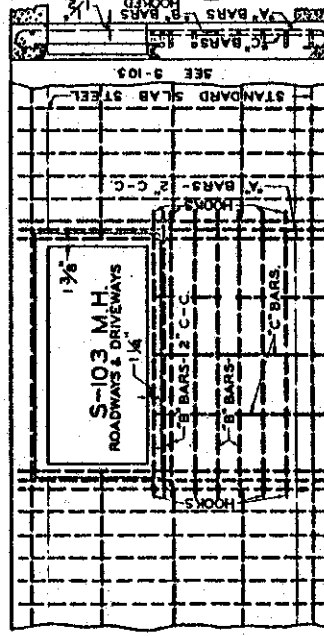
PLAN--MANHOLE ON CENTER LINE OF CULVERT BOX.



S-101 MANHOLE BOX	A BARS NO. SIZE LENGTH	B BARS NO. SIZE LENGTH	C BARS NO. SIZE LENGTH
2 S.	6 3/8 @ 2'-0"	2 3/8 @ 4'-6"	0
2.5 S.	6 3/8 @ 3'-3"	6 3/8 @ 4'-6"	0
3 S.	6 3/8 @ 3'-3"	6 3/8 @ 4'-6"	0
3.5 S.	6 3/8 @ 4'-3"	6 3/8 @ 4'-6"	0
4 S.	6 3/8 @ 4'-9"	6 3/8 @ 4'-6"	0
4.5 S.	6 1/2 @ 5'-3"	6 3/8 @ 4'-6"	0
5 S.	6 1/2 @ 5'-9"	6 3/8 @ 4'-6"	0
5.5 S.	6 1/2 @ 6'-3"	6 3/8 @ 4'-6"	0
6 S.	6 1/2 @ 6'-9"	10 3/8 @ 4'-6"	0

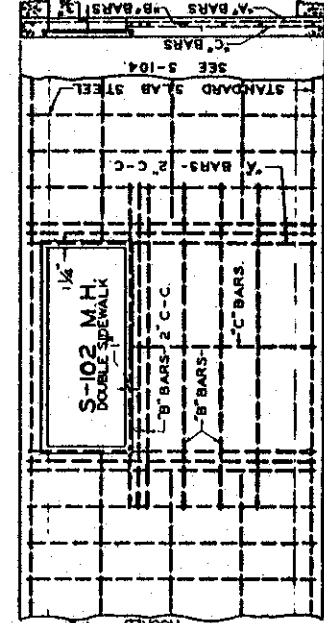


S-102 MANHOLE BOX	A BARS NO. SIZE LENGTH	B BARS NO. SIZE LENGTH	C BARS NO. SIZE LENGTH
2 S.	6 3/8 @ 2'-0"	2 3/8 @ 6'-0"	0
2.5 S.	6 3/8 @ 3'-3"	6 3/8 @ 6'-0"	2 3/8 @ 0'-10"
3 S.	6 3/8 @ 3'-9"	6 3/8 @ 6'-0"	2 3/8 @ 1'-1"
3.5 S.	6 3/8 @ 4'-3"	6 3/8 @ 6'-0"	2 3/8 @ 1'-4"
4 S.	6 3/8 @ 4'-9"	6 3/8 @ 6'-0"	2 3/8 @ 1'-7"
4.5 S.	6 1/2 @ 5'-3"	6 3/8 @ 6'-0"	2 3/8 @ 1'-10"
5 S.	6 1/2 @ 5'-9"	10 3/8 @ 6'-0"	2 3/8 @ 2'-1"
5.5 S.	6 1/2 @ 6'-3"	10 3/8 @ 6'-0"	2 3/8 @ 2'-4"
6 S.	6 1/2 @ 6'-9"	10 3/8 @ 6'-0"	2 3/8 @ 2'-7"



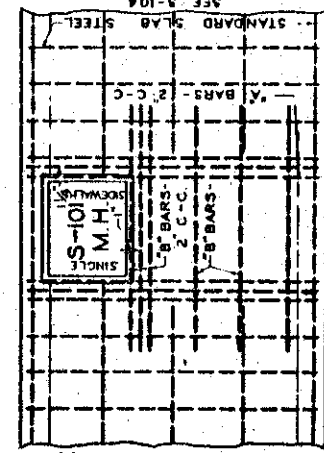
S-103 MANHOLE BOX	A BARS NO. SIZE LENGTH	B BARS NO. SIZE LENGTH	C BARS NO. SIZE LENGTH
2 R.	6 3/8 @ 3'-9 1/2"	0	0
2.5 R.	6 5/8 @ 4'-3 1/2"	3 5/8 @ 6'-6"	3 5/8 @ 1'-0"
3 R.	6 3/8 @ 5'-1 1/2"	4 5/8 @ 6'-6"	3 5/8 @ 1'-6"
3.5 R.	6 5/8 @ 5'-7 1/2"	4 5/8 @ 6'-6"	3 5/8 @ 2'-2"
4 R.	6 3/8 @ 6'-1 1/2"	6 5/8 @ 6'-6"	3 5/8 @ 2'-8"
4.5 R.	6 5/8 @ 6'-7 1/2"	6 5/8 @ 6'-6"	3 5/8 @ 3'-2"
5 R.	6 3/4 @ 7'-4 3/4"	8 5/8 @ 6'-6"	3 5/8 @ 3'-8"
5.5 R.	6 3/4 @ 7'-10 3/4"	8 5/8 @ 6'-6"	3 5/8 @ 4'-2"
6 R.	6 3/4 @ 8'-4 3/4"	9 5/8 @ 6'-6"	3 5/8 @ 4'-6"

NOTE--A BARS FOR USE WITH S-103 M.H. TO BE SIMILAR TO STANDARD TRANSVERSE STEEL SEE 3-103.



S-102 MANHOLE BOX	A BARS NO. SIZE LENGTH	B BARS NO. SIZE LENGTH	C BARS NO. SIZE LENGTH
2 S.	6 3/8 @ 2'-0"	3 3/8 @ 6'-0"	1 3/8 @ 0'-11"
2.5 S.	6 3/8 @ 3'-3"	3 3/8 @ 6'-0"	1 3/8 @ 1'-5"
3 S.	6 3/8 @ 3'-9"	4 3/8 @ 6'-0"	1 3/8 @ 1'-11"
3.5 S.	6 3/8 @ 4'-3"	5 3/8 @ 6'-0"	1 3/8 @ 2'-5"
4 S.	6 3/8 @ 4'-9"	6 3/8 @ 6'-0"	1 3/8 @ 2'-11"
4.5 S.	6 1/2 @ 5'-3"	6 3/8 @ 6'-0"	1 3/8 @ 3'-5"
5 S.	6 1/2 @ 5'-9"	7 3/8 @ 6'-0"	1 3/8 @ 3'-11"
5.5 S.	6 1/2 @ 6'-3"	8 3/8 @ 6'-0"	1 3/8 @ 4'-3"
6 S.	6 1/2 @ 6'-9"	9 3/8 @ 6'-0"	1 3/8 @ 4'-11"

PLAN--MANHOLE ON SIDEWALL OF CULVERT BOX.



S-101 MANHOLE BOX	A BARS NO. SIZE LENGTH	B BARS NO. SIZE LENGTH	C BARS NO. SIZE LENGTH
2 S.	6 3/8 @ 2'-0"	2 3/8 @ 4'-6"	0
2.5 S.	6 3/8 @ 3'-3"	6 3/8 @ 4'-6"	0
3 S.	6 3/8 @ 3'-3"	6 3/8 @ 4'-6"	0
3.5 S.	6 3/8 @ 4'-3"	6 3/8 @ 4'-6"	0
4 S.	6 3/8 @ 4'-9"	6 3/8 @ 4'-6"	0
4.5 S.	6 1/2 @ 5'-3"	6 3/8 @ 4'-6"	0
5 S.	6 1/2 @ 5'-9"	6 3/8 @ 4'-6"	0
5.5 S.	6 1/2 @ 6'-3"	6 3/8 @ 4'-6"	0
6 S.	6 1/2 @ 6'-9"	10 3/8 @ 4'-6"	0

DETAIL OF B BARS FOR USE WITH S-103 M.H.

CITY OF PASADENA  
 APPROVED BY *George W. H. ...*  
 CITY ENGINEER & Supt. OF STREETS  
 DATE *May 3, 1932.*

STANDARD  
 STEEL DETAIL AT MANHOLES  
 FOR SINGLE BOX CULVERTS.  
 SUBMITTED BY *AC. ...*  
 ASSISTANT ENGINEER CHECKED BY *ACM*

S-108.