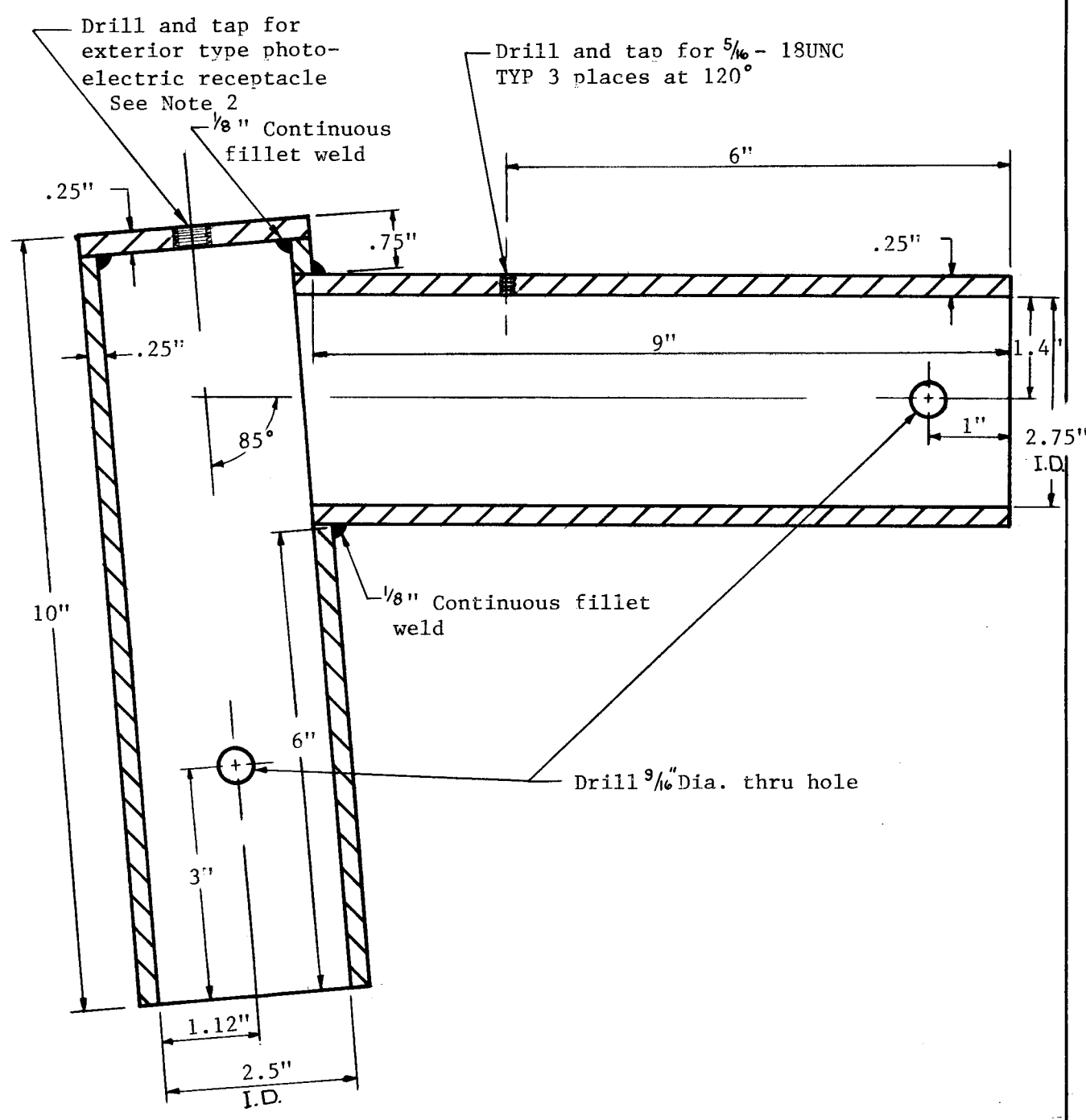


APVD.	
REVISION	
BY	
DATE	
APVD.	
REVISION	
BY	
DATE	



- NOTES:
1. The mounting adaptor ends shall be free of burrs and sharp projections. The mounting adaptor shall be constructed of 6063-T6 aluminum or galvanized steel tubing with $\frac{1}{4}$ " wall thickness and inside diameters as shown.
 2. Mounting adaptor to be drilled and tapped as shown to accept exterior type photoelectric receptacle, General Electric Catalogue #C 403 G001 or approved equal.

CITY OF PASADENA - PUBLIC WORKS DEPT. - TRAFFIC DIVISION

DRAWN: J. WOOD
CHECKED: MFA/IJL
APPROVED: *Ad Krueger*
DATE: 4/20/76

Spherical Luminaire Mounting Adaptor
MOUNTING ADAPTOR DETAIL

SCALE: NONE
DRAWING NO.
S-911
Sht. 2 of 2