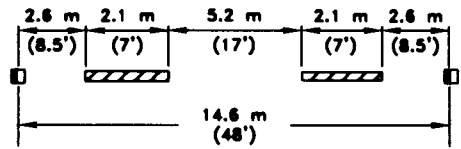
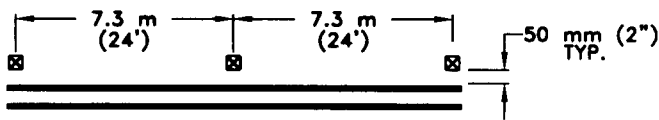


DETAIL 1: Two-way no passing with painted stripe

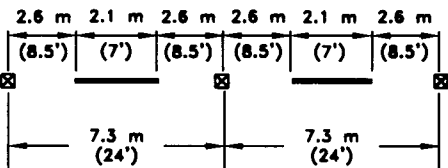


DETAIL 5 White lane line stripe

Through Traffic Side

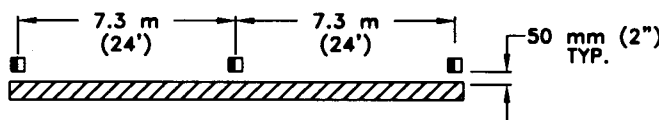


DETAIL 2: Painted median

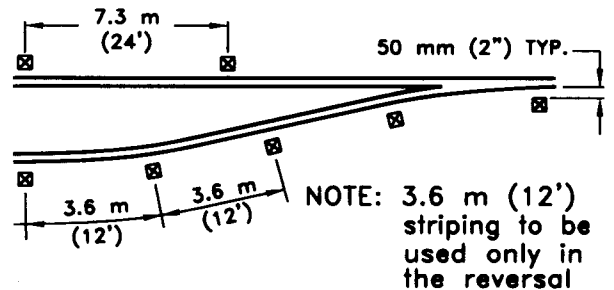


DETAIL 6: Dashed centerline

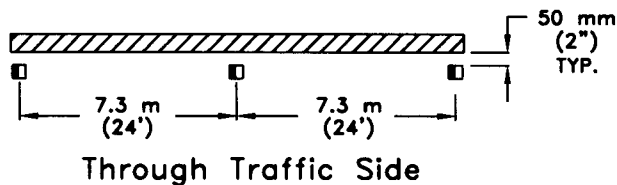
Through Traffic Side



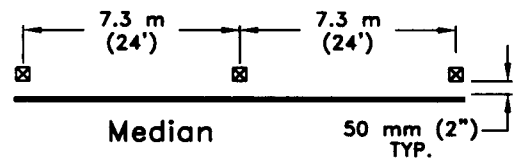
DETAIL 3: 200 mm (8") White left turn lane stripe



DETAIL 7: Reversal into left turn lane



DETAIL 4: 200 mm (8") White right turn lane stripe



DETAIL 8: Left edge line with single yellow stripe

NOTE:

Raised pavement markers to be installed at a minimum distance of 150 mm (6") from any crosswalk line or limit line.

CITY OF PASADENA - PUBLIC WORKS & TRANSPORTATION DEPARTMENT

DRAWN BY: *M.M.*
M. MOJICA

CHECKED BY:
D. ORTEGA *SO*

SUBMITTED BY
C. HERNANDEZ *SH*

**RAISED PAVEMENT
MARKER
INSTALLATION DETAIL**

APPROVED BY:
Bahngyan

TRANSPORTATION ADMINISTRATOR RTE NO. 1820 EXPIRES JUNE 30, 2006

6/4/01

DATE

REVISION: 2
UNITS: DUAL

STANDARD PLAN:

S-710

SHEET 1 OF 3

5710-1-REV2.PWG 3/21/01